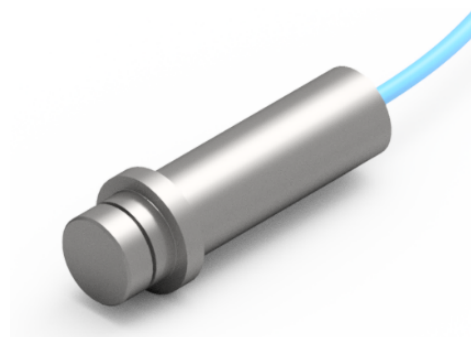


FLUSH MOUNT PRESSURE and TEMPERATURE TRANSMITTER

MPT 402

GENERAL

- **Flush mountable, low cost** pressure and temperature transducer
- **Automatic compensation** for line resistance and power supply changes
- Made of **corrosive resistant titanium** (6AL4V) – excellent performance with corrosive media
- **Absolute** or **sealed reference** options
- **Long term stability** versions
- **High vibrations** options
- **Coating options** for liquids and bio-fluids (PTFE or nanostructured surface)
- Compatible with Micron's pressure fittings and calibration adaptors



MECHANICAL

Standard pressure ranges	2	3.5	7	15	20	35	70	140	200	350	500	bar
	25	50	100	200	300	500	1000	2000	3000	5000	7000	psi
Non-standard pressure ranges								0.7	1	2	10	bar
								10	15	30	150	psi

Other possible ranges	Consult Factory
Over Pressure (No change out of spec.)	2 x Range
Usable Pressure (Small change in balance)	3 x Range
Burst Pressure	6 x Range

HAPTICA S.r.l.

FLUSH MOUNT PRESSURE and TEMPERATURE TRANSMITTER

PERFORMANCE (PRESSURE)

Performance Option	OPTIONS (ALL VALUES MAXIMUM)				
	A (STD)	B	C	D	
Balance (Zero)	4.00 ± 0.5	4.00 ± 0.5	4.00 ± 0.5	4.00 ± 0.5	mA
Full Scale Sensitivity	16 ± 0.5	16 ± 0.5	16 ± 0.5	16 ± 0.5	mA
Static Error Band	± 0.5	± 0.25	± 0.25	± 0.25	% FS (BFSL)
Thermal Balance (Zero) Shift	± 0.036	± 0.036	± 0.018	± 0.009	% FS/°C
Thermal Sensitivity Shift	± 0.036	± 0.036	± 0.018	± 0.009	% FS/°C
Long Term Stability (std)	< ± 2	< ± 2	< ± 2	< ± 2	% FS/yr
Long Term Stability Options	L10 < ± 1	L5 < ± 0.5	L2 < ± 0.2	L1 < ± 0.1	% FS/yr

PERFORMANCE (TEMPERATURE)

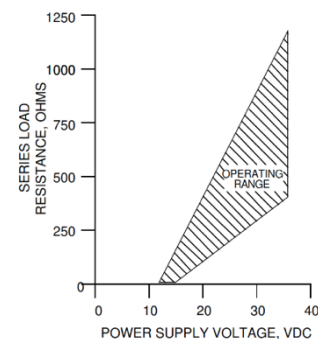
Balance @ 0°C	± 2.00	mA
Sensitivity (5.0 V DC excitation)	8.6 ± 0.9	mA/°C
Temperature Accuracy	± 0.27	°C
Input Resistance	6.5 ± 0.8	kΩ
Output Resistance	5.0 ± 0.8	kΩ

ENVIRONMENTAL

Storage and Operating Temperature	20°C to +80° C
Compensated Temperature Range (Consult factory for other ranges)	0°C to +55°C
Extended Temperature Range	-54°C to + 95°C
Acceleration (Consult factory for high vibration options)	100g's any axis
Media Compatibility (wetted surface)	Titanium 6AL4V

ELECTRICAL

Input Constant Voltage Excited [V DC]	12-38
Maximum Voltage (for short periods) [V]	40
Input Load Resistance [Ω]	see chart
Insulation Resistance Minimum @50 VDC [MΩ]	50

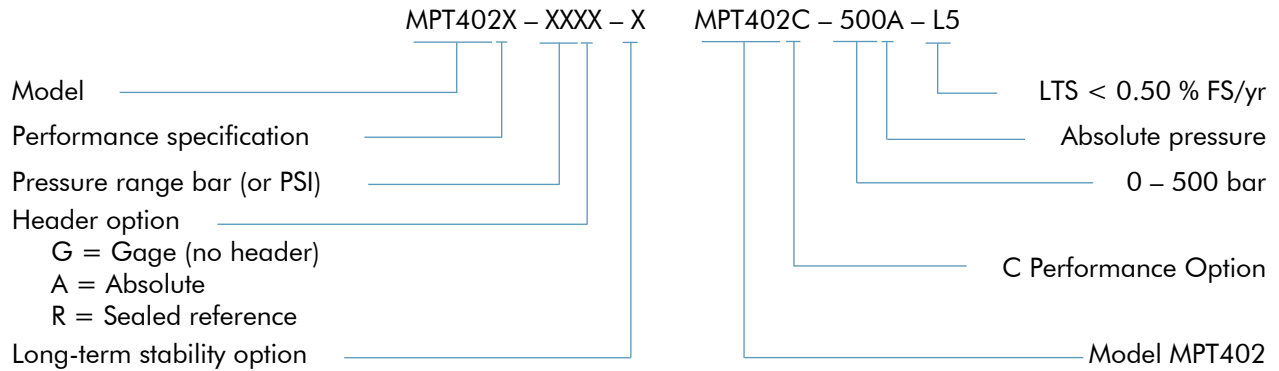


HAPTICA S.r.l.

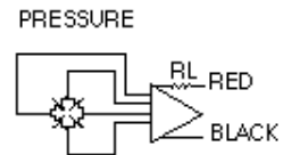
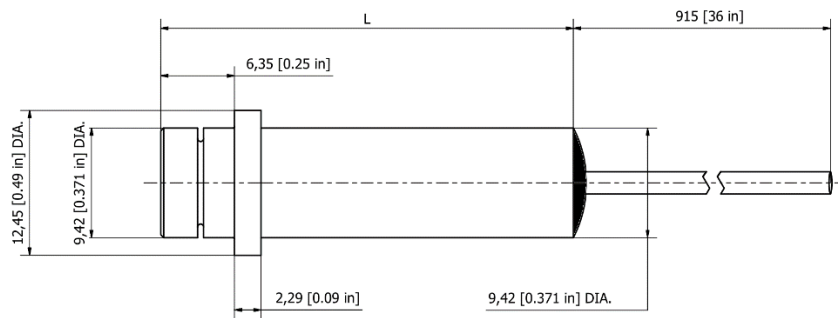
Place of business: Via Grazioli 2, 21052 Busto Arsizio (VA) Italy, - Registered office: Via Podgora 15, 20122 Milan, Italy
Website www.hapticasensing.com - Email info@hapticasensing.com - Phone +39 329 338 8201 / +39 0331 314395

FLUSH MOUNT PRESSURE and TEMPERATURE TRANSMITTER

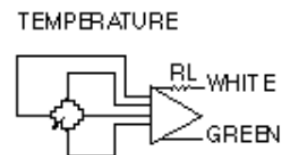
ORDERING FORMAT EXAMPLE



OUTLINE



Unit type	Transducer length L
Gage	78,74 mm [3.1 in]
Absolute, sealed reference	86,36 mm [3.4 in]



HAPTICA S.r.l.

Place of business: Via Grazioli 2, 21052 Busto Arsizio (VA) Italy, - Registered office: Via Podgora 15, 20122 Milan, Italy
 Website www.hapticasensing.com - Email info@hapticasensing.com - Phone +39 329 338 8201 / +39 0331 314395