

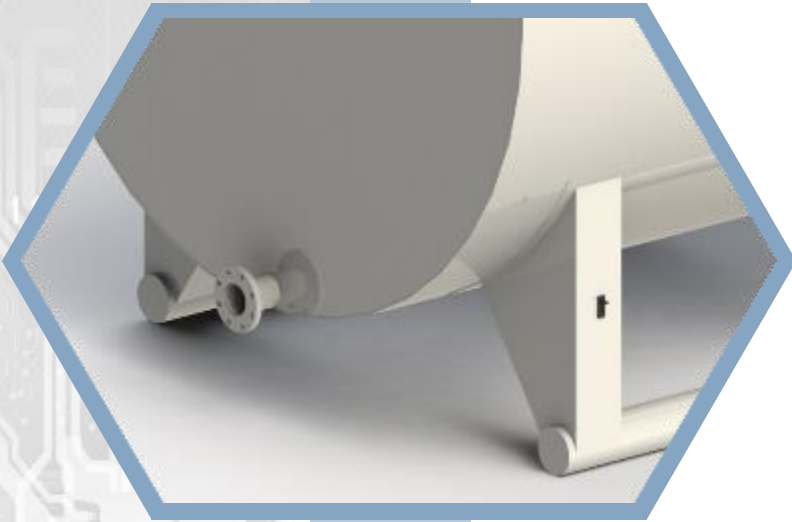


HAPTICA™

Smart Load Cell

Smart Load Cell

Decrease cost of ownership



Wireless monitoring of fluid fill level by a strap-on load cell.

A load cell designed using semiconductor strain gauge allows to **measure** the quantity of **fluid** inside **any type of container**.

The load cell is applied externally, data are collected and sent to the user.



Advantages

- ✓ Strap-on load cell (parallel mount, easy integration);
- ✓ Does not require pressure or ultrasonic sensors;
- ✓ Wireless and long distance data acquisition;
- ✓ Continuous fill level indicator;
- ✓ Reduces risk of out-of-stock events.